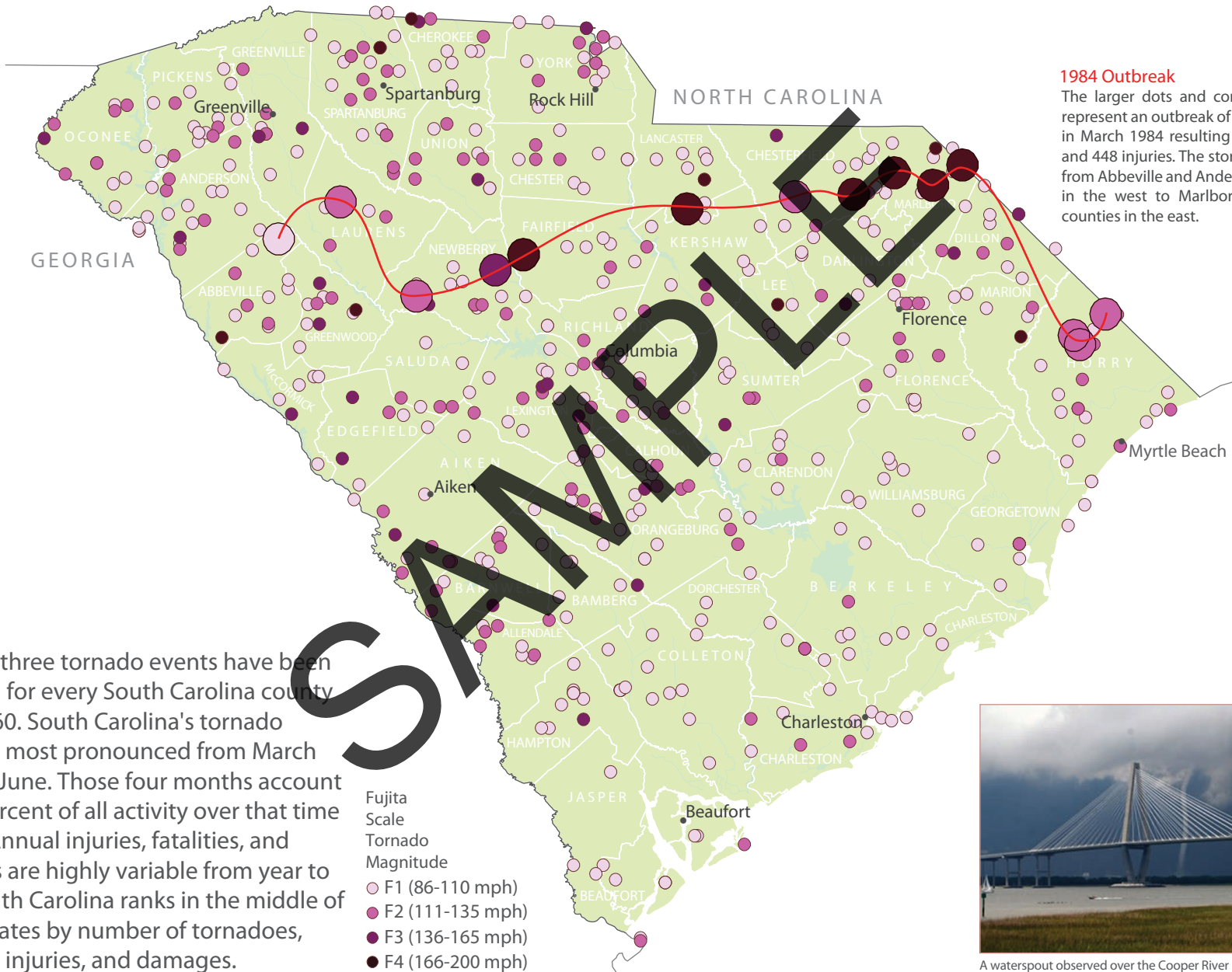


TORNADOES



At least three tornado events have been recorded for every South Carolina county since 1960. South Carolina's tornado season is most pronounced from March through June. Those four months account for 52 percent of all activity over that time period. Annual injuries, fatalities, and damages are highly variable from year to year. South Carolina ranks in the middle of all U.S. states by number of tornadoes, fatalities, injuries, and damages.



A waterspout observed over the Cooper River near Charleston.